



# South Side Park Stormwater Management & 2021 Large Diameter Sewer Rehabilitation

---

## Community Meeting

---

*Virtual Meeting  
January 23, 2024*

# Agenda

- Welcome and Introductions
- Stormwater Overview
- Large Diameter Sewer Rehabilitation Project Overview
- Question and Answer

# Project Team

**Project Owner** – Pittsburgh Water and Sewer Authority (PWSA)


- **PWSA Project Manager:** Meghan Simek
- **PWSA Construction Project Manager:** Bill Lesterick
- **PWSA Construction Communications:** Mora McLaughlin

**Construction Management and Inspection** – Stephanie Downs, Mott MacDonald

**Project Designer** – HDR Engineering, Inc.

**Project Contractor** - W. A. Petrakis

We would like to thank Friends of South Side Park for their partnership throughout the design and planning process.





# Stormwater Overview

---


*Pittsburgh has a stormwater  
management problem*



# Our system was not built for this volume of stormwater

- We have more pavement and hard surfaces than we did 100 years ago
- We have more rain, and localized severe storms, than the system is built to handle





## Too much stormwater + sewer water = pollution in our rivers

---


It doesn't take much to overflow the system – it can happen with just an inch of rainfall or less.





# PWSA is stepping up

To tackle our stormwater challenges, PWSA is building an innovative stormwater management system, designed to absorb or redirect as much rainwater as possible *before* it causes flooding and/or enters our overburdened sewer system and waterways.

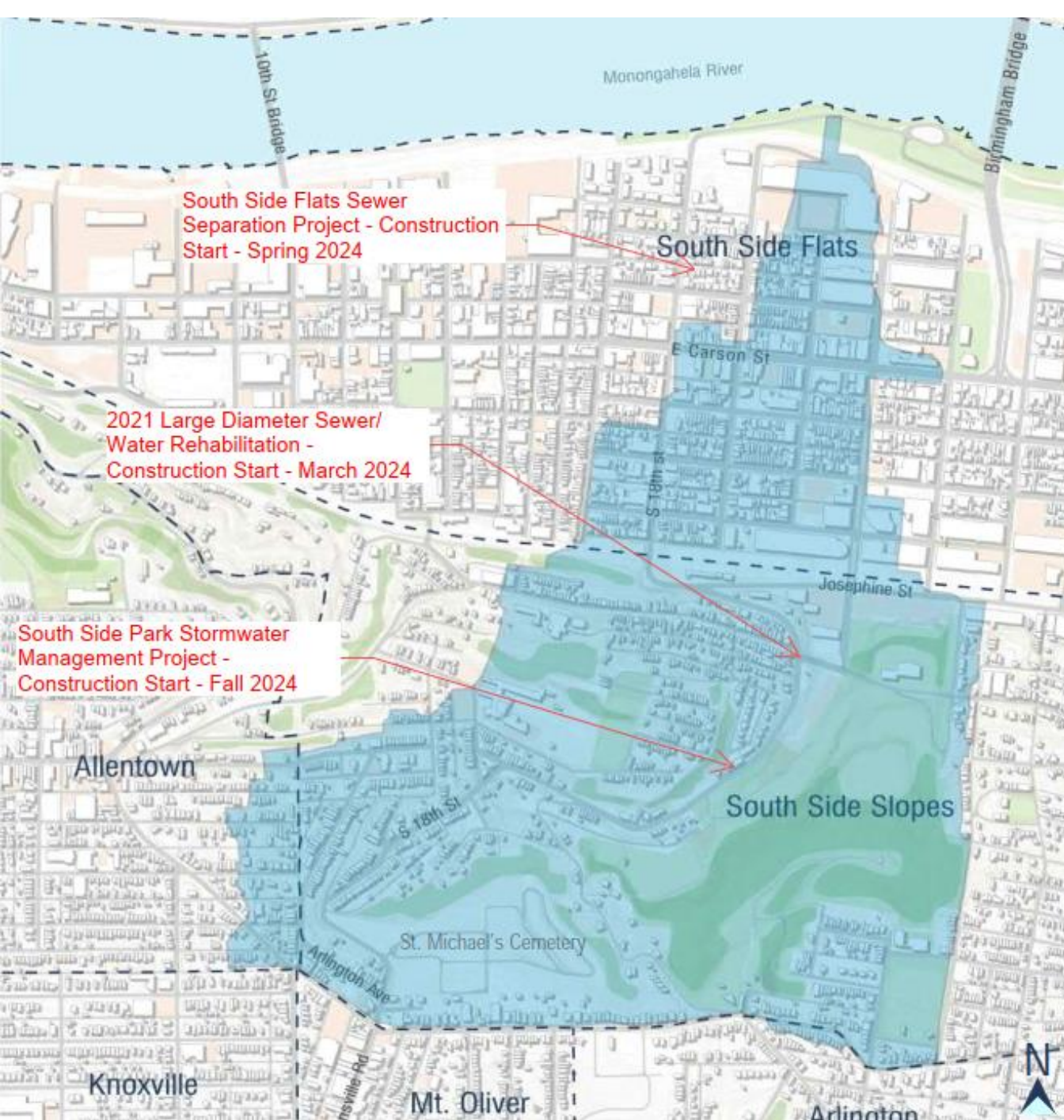




# South Side Park Stormwater Project Overview

---





## GREEN INFRASTRUCTURE AND STORMWATER MANAGEMENT: HOW DID WE GET HERE?

- M-16 Watershed Goals
  - Reduce CSOs
  - Create Capacity in Combined Sewers
- Project Goals – South Side Park
  - 1.5” from 9 Acres of Impervious Area
  - Capture and Retain Stormwater to Slowly Release
- Presented Final Preliminary Design at August 2019 Community Meeting
- Currently in 90% Design Phase

# Additional Infrastructure Improvements

During the survey for the Park Project, PWSA discovered that the large diameter sewer was in need of repair and structural reinforcement prior to the start of the South Side Park Project.

**Location:** Bottom of Serpentine Stairs to S. 21st Street

To accommodate this work, Phase 1 park improvements will be made in two phases:

- Phase 1a - South Serpentine Street steps
- Phase 1b - North of Serpentine Steps

# Project Goals

- Reduce combined sewer overflows into the river
- Reduce basement backups
- Slow down the flow of stormwater from higher elevation areas

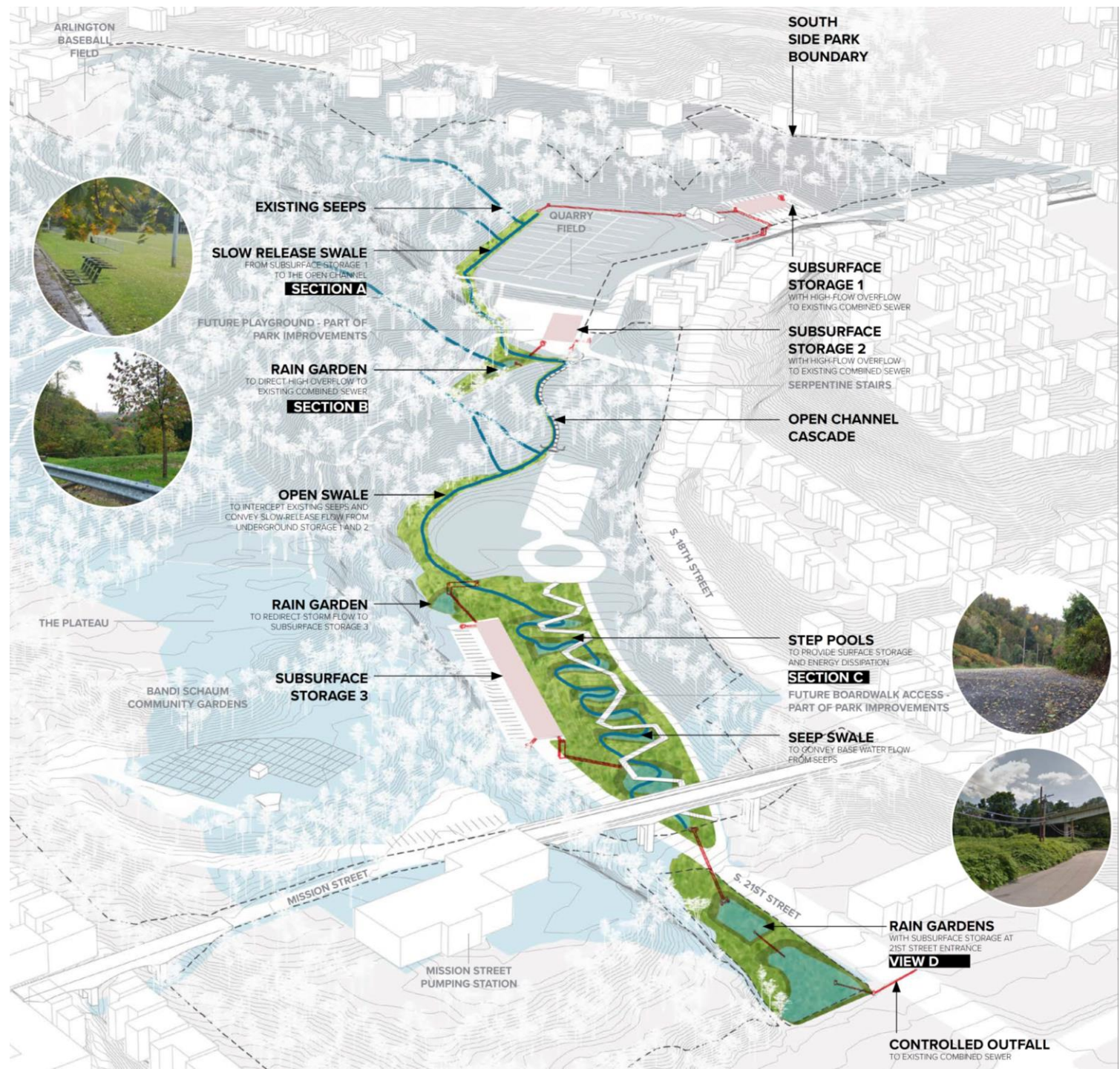


# Project design team is finalizing bid package for Phase 1 of Park Improvement construction.

Construction activities you will see in Park in preparation for South Side Park Improvements:

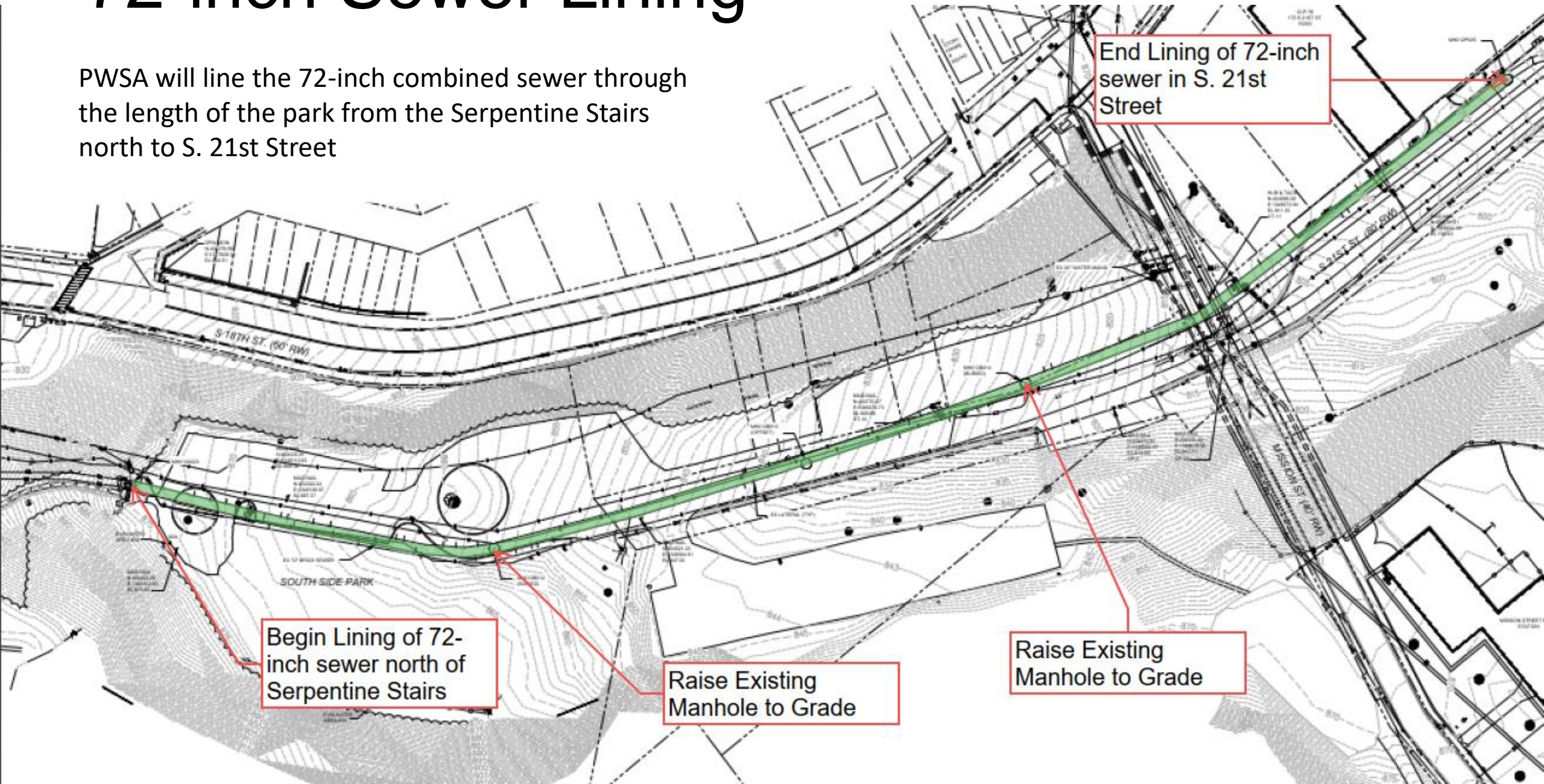
## 2021 Large Diameter Sewer Rehabilitation

- PWSA will relocate 2-30-inch water mains under the Mission Street Bridge
- PWSA will line 1200-feet of the existing 72-inch sewer from the Serpentine Stairs to Josephine Street



# 72-inch Sewer Lining

PWSA will line the 72-inch combined sewer through the length of the park from the Serpentine Stairs north to S. 21st Street



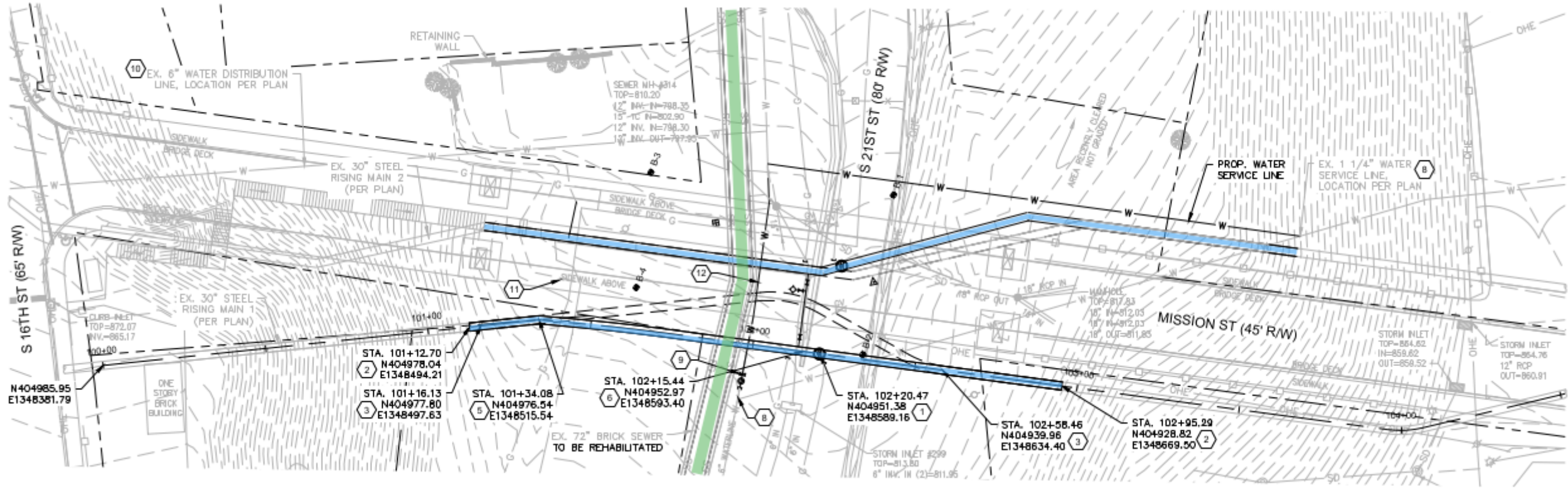
End Lining of 72-inch sewer in S. 21st Street

Begin Lining of 72-inch sewer north of Serpentine Stairs

Raise Existing Manhole to Grade

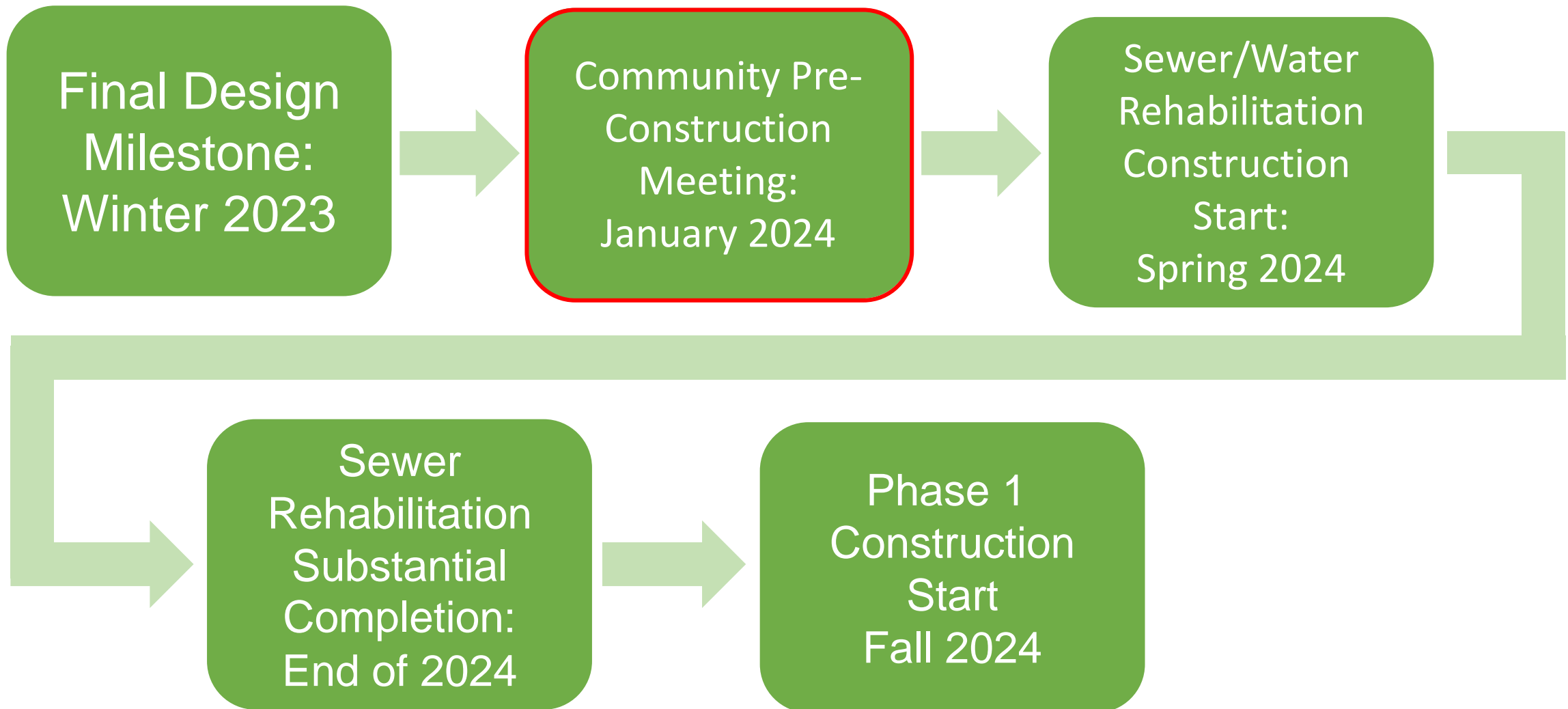
Raise Existing Manhole to Grade

# Water Line Replacement



PWSA will replace 2-30-inch waterlines under the Mission Street Bridge

# Project Schedule



# Impacts to the neighborhood

- Construction on this project will be confined to the park and South 21<sup>st</sup> Street.
- PWSA's contractor will close the Mission Street Steps and Pedestrian Traffic from the Serpentine Stairs to South 21<sup>st</sup> Street. Closure signs will be placed accordingly.
- Water and sewer service will be maintained for residents surrounding the park during the duration of the work.
- Project updates will be posted on the project page, [pgh2o.com/SouthSidePark](https://pgh2o.com/SouthSidePark) and will be shared with Friends of South Side Park throughout the project.



**Thank you**

## **Project Contacts:**

Meghan Simek  
Design Project Manager  
412-606-2921  
[msimek@pgh2o.com](mailto:msimek@pgh2o.com)

Mora McLaughlin  
Construction Communications Project Manager  
412-689-4137  
[mmclaughlin@pgh2o.com](mailto:mmclaughlin@pgh2o.com)

Stephanie Downs  
Construction Manager – Mott MacDonald  
[stephanie.downs@mottmac.com](mailto:stephanie.downs@mottmac.com)

[www.pgh2o.com/SouthSidePark](http://www.pgh2o.com/SouthSidePark)