



Thomas and McPherson Stormwater Project: Street Tree Plan

The Pittsburgh Water and Sewer Authority (PWSA) has coordinated with City Forestry to manage the existing trees on Thomas and McPherson boulevards within the construction area.

- During the pre-construction walk through, City Forestry indicated that certain existing trees in the median were in poor condition and requested they be removed as part of this project.
- City Forestry requested that all tree branches that will be impacted during construction and unable to withstand flexing be pruned.
- The contractor received permission from City Forestry to stockpile material in the center median near the trees, provided the weight distribution of the storage will not cause soil compaction. Heavier materials can be stockpiled in an area that will be excavated later in the project.
- Finally, healthy, mature trees were specifically addressed in the design and contract requirements to protect during construction.

PWSA is committed to preserving as many healthy, mature trees as possible. Throughout construction, a certified arborist will inspect the work to ensure that both protection of existing trees and any pre-approved tree pruning, and removals follow all City requirements.

Three trees will be removed, as requested by City Forestry. They are in the median in front of 6735 McPherson Blvd, 6745 McPherson Blvd, and 6755 McPherson Blvd.

For the entire project, all trees within the project area will be pruned when necessary and when directed by City Forestry. Additionally, three Crab Apple trees will be removed. A safety fence will be installed eight feet from the curb to align with needed tree trimming. All trees will be pruned to provide clearance for the 6-foot-tall fence that will be installed in the medians for tree protection. Tree pruning, removals as well as installation of tree protection fencing will occur as construction starts in each project area, beginning in August 2021.

If you have any specific questions, please contact the PWSA Communications Manager:
Rebecca Zito, 412-689-1462, rzito@pgh2o.com

You can also reach the City Forestry division of the Department of Public Works:
412-665-3625

Street Tree Plan

Project Areas

- **Thomas Boulevard West (6700 Block)**
- Thomas Boulevard East
- McPherson Boulevard West
- McPherson Boulevard East

Legend



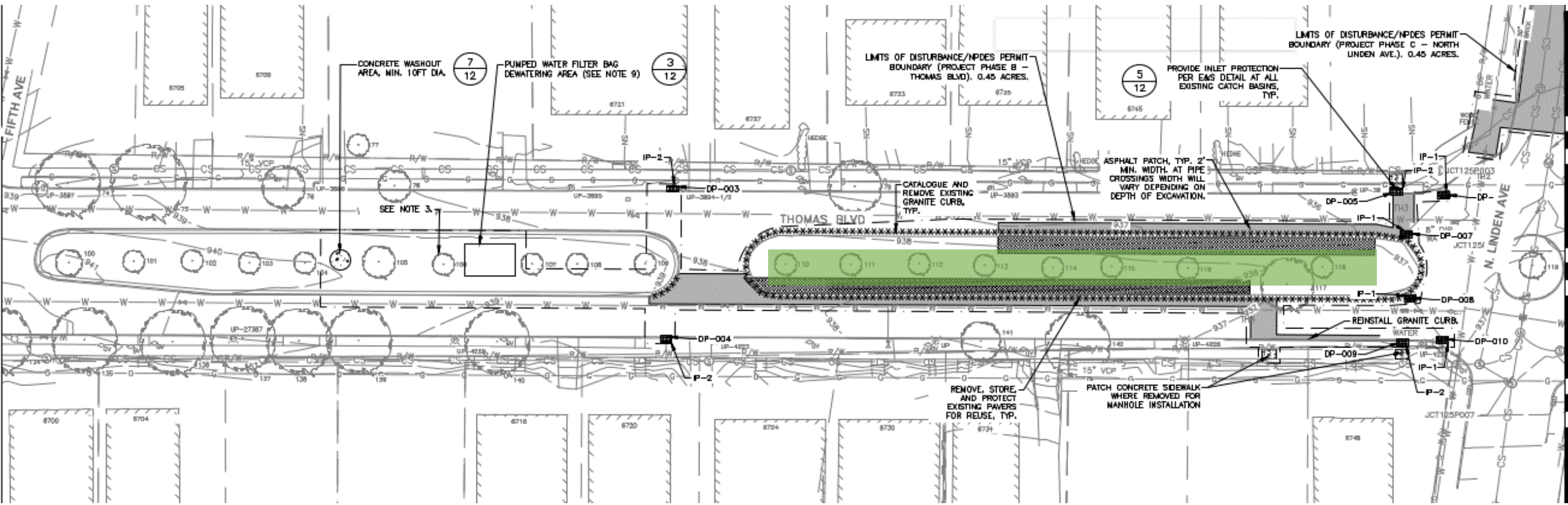
Protect existing tree and prune



Tree removal



Underground detention



Street Tree Plan

Project Areas

- Thomas Boulevard West
- **Thomas Boulevard East (6800 Block)**
- McPherson Boulevard West
- McPherson Boulevard East

Legend



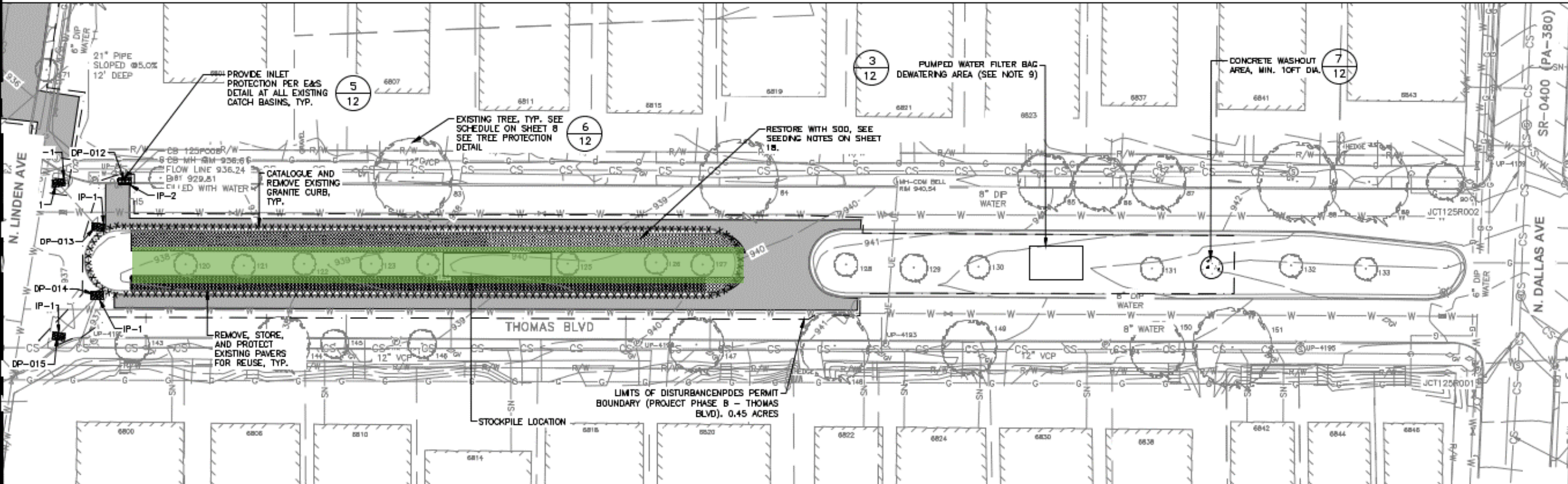
Protect existing tree and prune



Tree removal



Underground detention



Street Tree Plan

Project Areas

- Thomas Boulevard West
- Thomas Boulevard East
- **McPherson Boulevard West (6700 Block)**
- McPherson Boulevard East

Legend



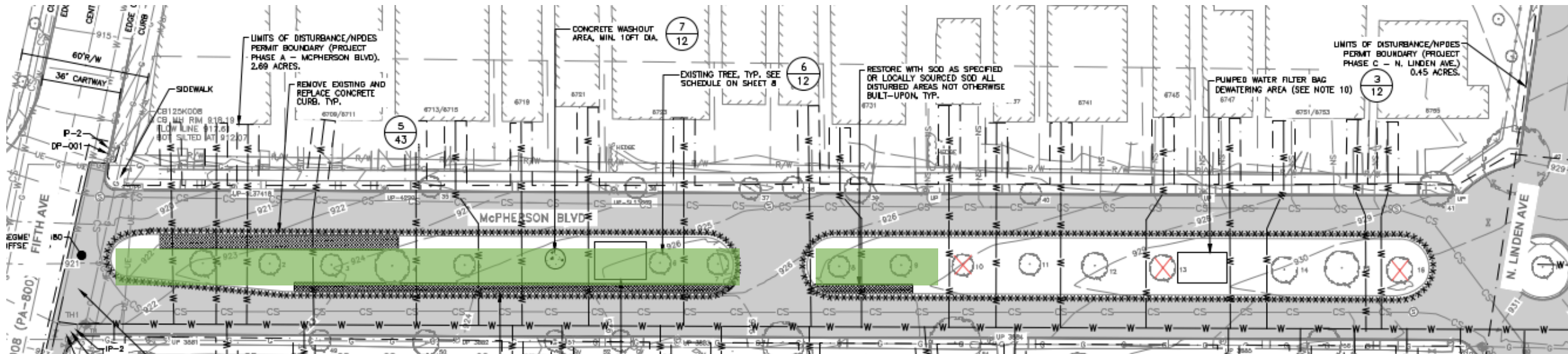
Protect existing tree and prune



Tree removal



Underground detention






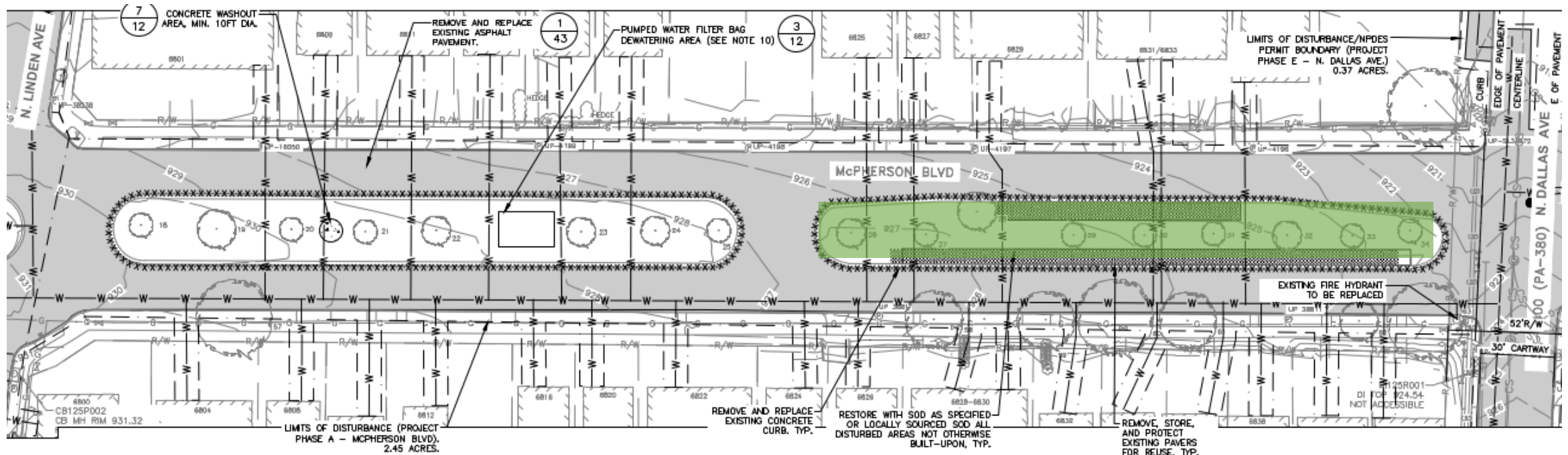
Street Tree Plan

Project Areas

- Thomas Boulevard West
- Thomas Boulevard East
- McPherson Boulevard West
- **McPherson Boulevard East (6800 Block)**

Legend

-  Protect existing tree and prune
-  Tree removal
-  Underground detention



EXCAVATION. DEMOLITION. EROSION CONTROL: